

DISPLAY ONLY

cavalier  
homes®



# BRIGHTON

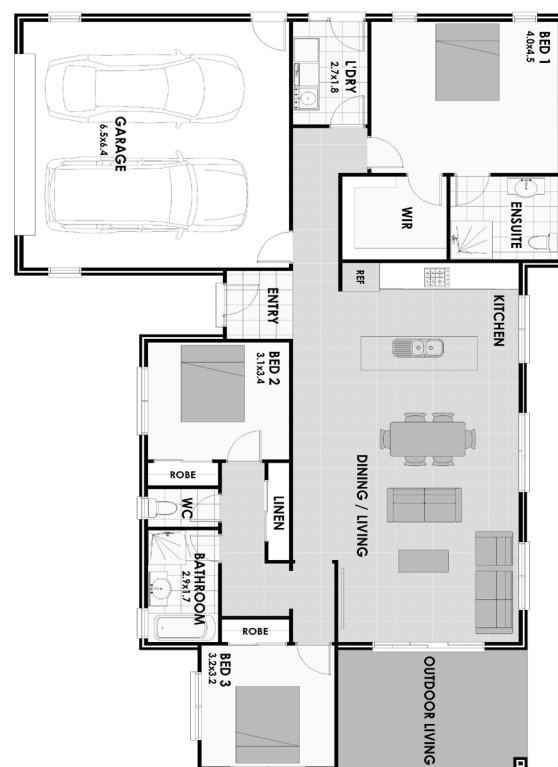
3 | 2 | 2

Contemporary styling from the outside to a smart floor plan on the inside, this home is a quality choice for the young family, first home buyer, or downsizer.

A generous Living/Dining area that leads out to a good sized Alfresco area. Large Master Bedroom with WIR and ensuite.

The other 2 bedrooms are ideal for the kids. A Modern Kitchen awaits.

This home won't disappoint.



LIVING 143m<sup>2</sup>

GARAGE 41.6m<sup>2</sup>

TOTAL = 199m<sup>2</sup>

## FOR FURTHER INFORMATION

E [enquiries@cavalierhomes.co.nz](mailto:enquiries@cavalierhomes.co.nz)  
[www.cavalierhomes.co.nz](http://www.cavalierhomes.co.nz)