



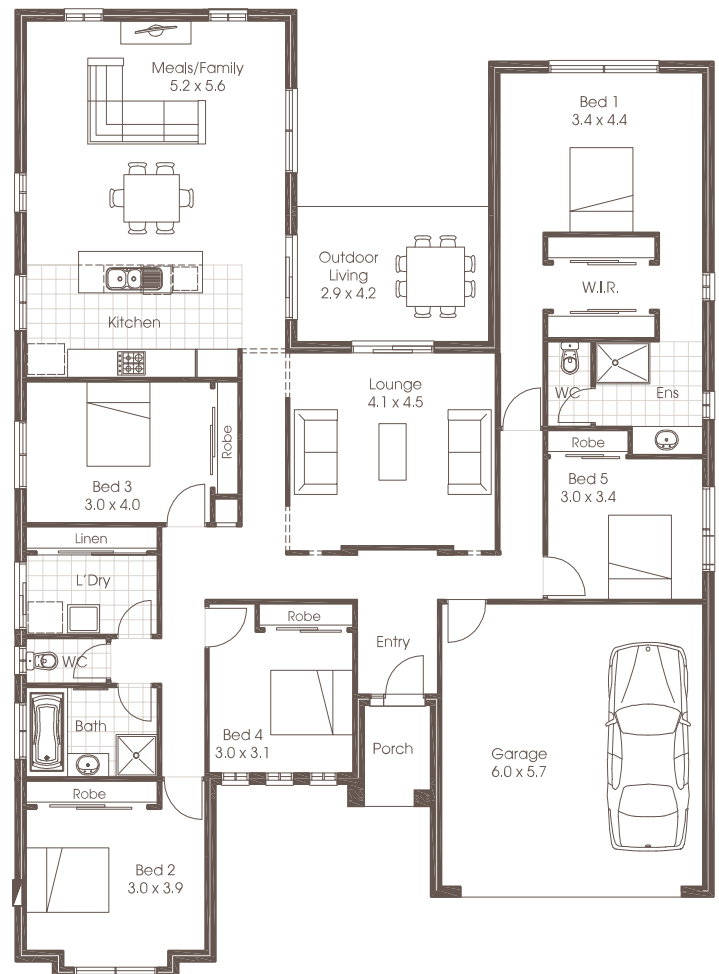
# ECLIPSE 28

5 | 2 | 2

You will instantly notice the beautiful lines and contours of the Eclipse. The designer kitchen allows you the versatility to entertain even the most boisterous crowds, or to cater more intimate occasions if the mood takes you.

With a refreshing undercover outdoor living area that's designed with privacy in mind, you can sit and chat or simply unwind. With the master suite nestled away from the main entertaining areas, you will feel like you have been taken away to a five-star resort.

LIVING 261.3m<sup>2</sup>      GARAGE 38.1m<sup>2</sup>  
 TOTAL = 208m<sup>2</sup>



## FOR FURTHER INFORMATION

E enquiries@cavalierhomes.co.nz  
 www.cavalierhomes.co.nz