



# HOWICK 27

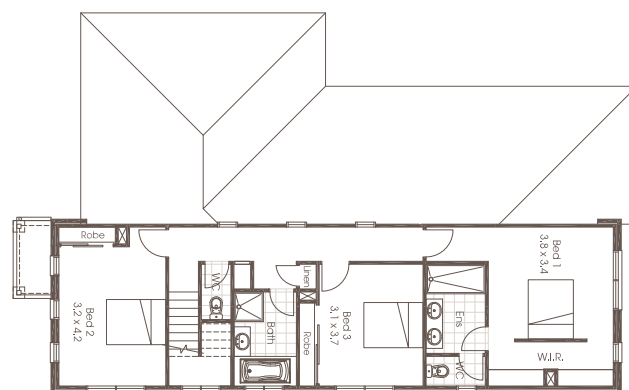
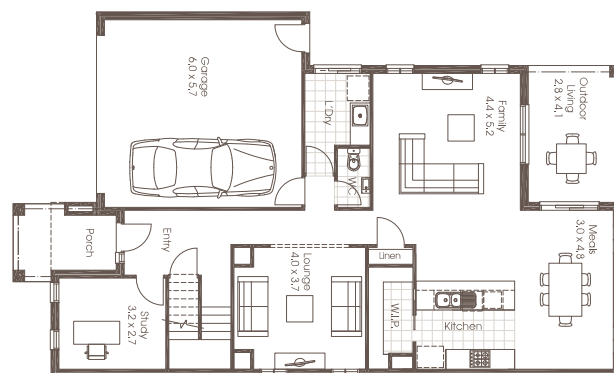
3 | 2.5 | 2

The Howick will take you where you want to go. The entire ground floor is dedicated to stylish and functional open plan living made special by its seamless connection to the outdoor living area.

With the generous sleeping quarters entirely upstairs, there are no boundaries when it comes to entertaining or putting your best foot forward.

LIVING 202.66m<sup>2</sup> GARAGE 37.60m<sup>2</sup>

TOTAL = 261.30m<sup>2</sup>



## FOR FURTHER INFORMATION

E [enquiries@cavalierhomes.co.nz](mailto:enquiries@cavalierhomes.co.nz)  
[www.cavalierhomes.co.nz](http://www.cavalierhomes.co.nz)





# HOWICK 27

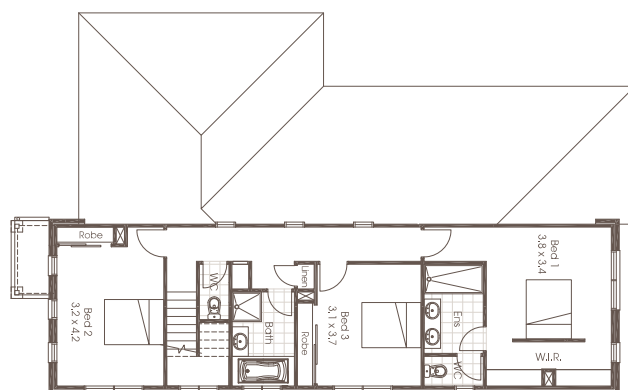
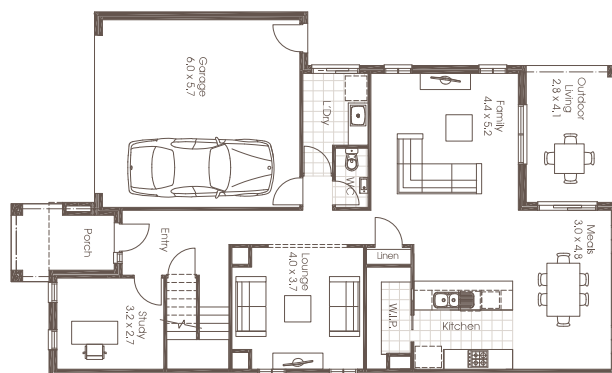
3 | 2.5 | 2

The Howick will take you where you want to go. The entire ground floor is dedicated to stylish and functional open plan living made special by its seamless connection to the outdoor living area.

With the generous sleeping quarters entirely upstairs, there are no boundaries when it comes to entertaining or putting your best foot forward.

LIVING 202.66m<sup>2</sup> GARAGE 37.60m<sup>2</sup>

TOTAL = 261.30m<sup>2</sup>



## FOR FURTHER INFORMATION

E [enquiries@cavalierhomes.co.nz](mailto:enquiries@cavalierhomes.co.nz)  
[www.cavalierhomes.co.nz](http://www.cavalierhomes.co.nz)





# HOWICK 31

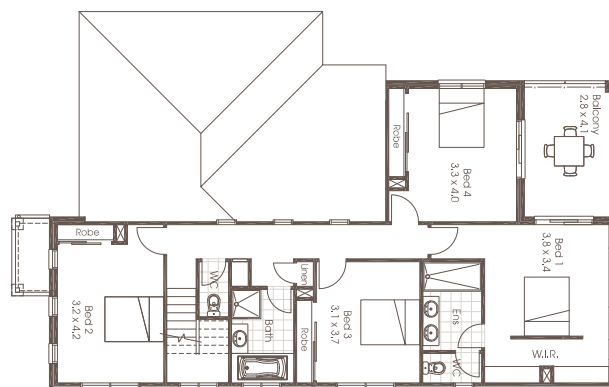
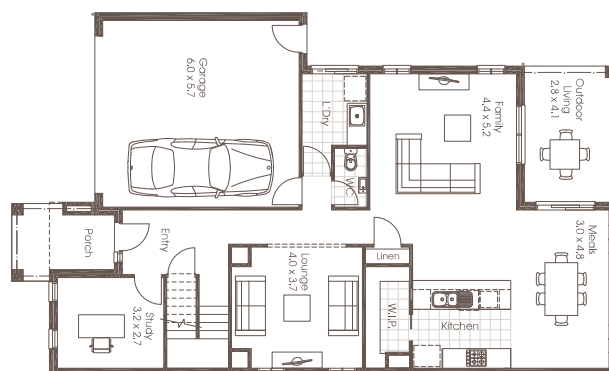
4 | 2.5 | 2

The Howick will take you where you want to go. The entire ground floor is dedicated to stylish and functional open plan living made special by its seamless connection to the outdoor living area.

With the generous sleeping quarters entirely upstairs, there are no boundaries when it comes to entertaining or putting your best foot forward.

LIVING 223.94m<sup>2</sup> GARAGE 37.60m<sup>2</sup>

TOTAL = 291.60m<sup>2</sup>



## FOR FURTHER INFORMATION

E [enquiries@cavalierhomes.co.nz](mailto:enquiries@cavalierhomes.co.nz)  
[www.cavalierhomes.co.nz](http://www.cavalierhomes.co.nz)





This floor plan shows a 4-bedroom house with a garage and a pool. The layout includes:

- Garage:** 6.0 x 5.7, located at the rear left, with a car parked inside.
- Entry:** Central entry with a staircase leading to the study and lounge.
- Study:** 3.2 x 2.7, located off the entry.
- Lounge:** 4.0 x 3.7, featuring a fireplace and access to the pool area.
- Kitchen:** 3.3 x 4.0, equipped with a cooktop, oven, and refrigerator.
- Dining Area:** 4.4 x 5.2, adjacent to the kitchen.
- Family Room:** 4.4 x 5.2, featuring a fireplace and access to the pool area.
- Living Room:** 2.8 x 4.1, located at the rear right.
- Bedroom 1:** 3.9 x 3.4, located at the front right, with a walk-in wardrobe (W.I.R.).
- Bedroom 2:** 3.2 x 4.2, located at the front left, with a walk-in wardrobe (W.I.R.).
- Bedroom 3:** 3.1 x 3.7, located at the front right, with a walk-in wardrobe (W.I.R.).
- Bedroom 4:** 3.3 x 4.0, located at the front right, with a walk-in wardrobe (W.I.R.).
- Bathroom:** Located between the front bedrooms.
- Pool:** 3.0 x 4.8, located at the rear right, with a lounge chair nearby.
- Outdoor Area:** 2.8 x 4.1, located at the rear right, with a dining table and chairs.
- Other Features:** A linen closet, a robe, and a study are also included.









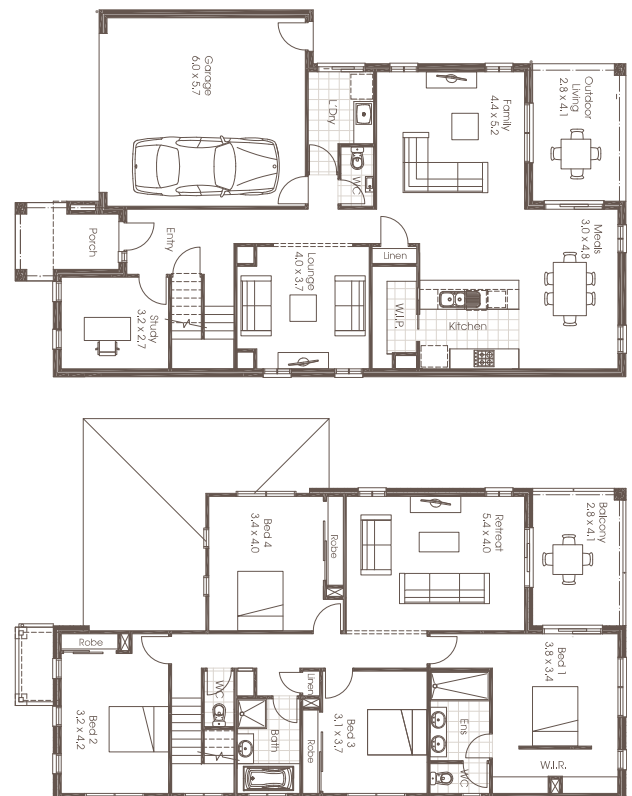
# HOWICK 33

4 | 2.5 | 2

The Howick will take you where you want to go. The entire ground floor is dedicated to stylish and functional open plan living made special by its seamless connection to the outdoor living area.

With the generous sleeping quarters entirely upstairs, there are no boundaries when it comes to entertaining or putting your best foot forward.

LIVING 247.86m<sup>2</sup> GARAGE 37.60m<sup>2</sup>  
TOTAL = 315.50m<sup>2</sup>



## FOR FURTHER INFORMATION

E enquiries@cavalierhomes.co.nz  
www.cavalierhomes.co.nz