

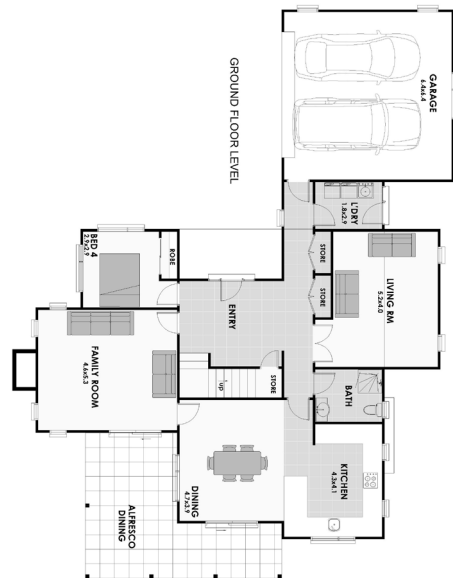


WARD

4 | 3 | 2

This is grandeur! Whether on a nice lifestyle section in the countryside or in a leafy suburb, this home commands great views from the balcony off the Master bedroom. Another two bedrooms upstairs and a fourth downstairs for guests or the teenager who needs the extra privacy.

A large Modern kitchen leads outside to an amazing alfresco area. Separate Family and Lounge rooms provide plenty of living space. This is definitely a home for the growing family.



LIVING 234.04m² GARAGE 40.96m²

TOTAL = 275m²

FOR FURTHER INFORMATION

E enquiries@cavalierhomes.co.nz
www.cavalierhomes.co.nz